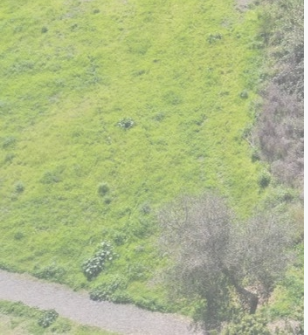

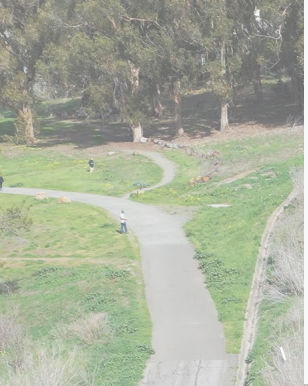





Glen Cove
Waterfront Park
Enhancement



Overview

- Intro
 - Q & A function: Project related questions
 - Chat: Co-hosts can help with technical difficulties
 - Presentation
 - Recording and PowerPoint will be posted to solanorcd.org/glen-cove
 - Questions/Comments
- 
- 
- 
- 

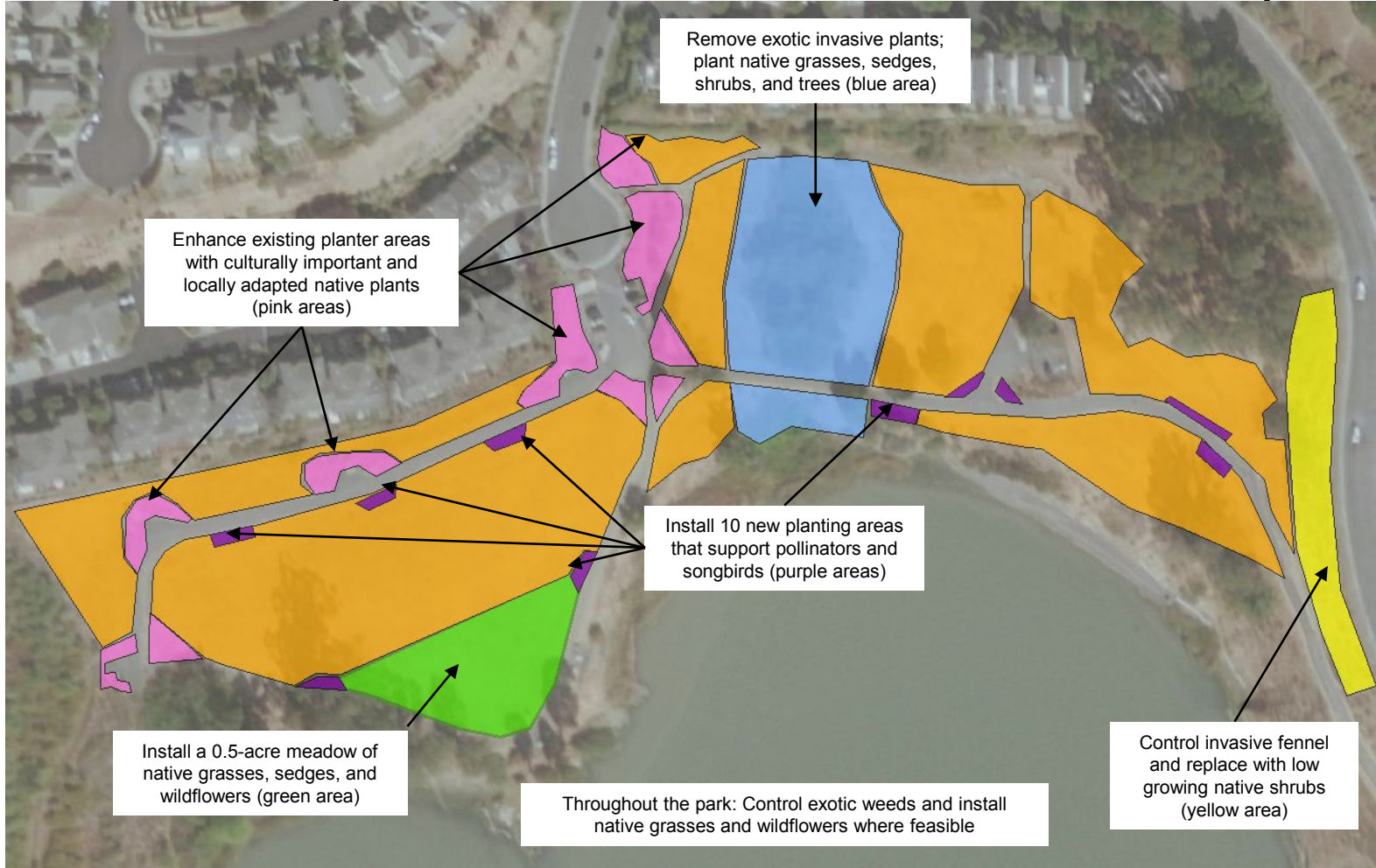


Glen Cove Waterfront Park Enhancement Project

Project Funding
Provided By:



Project Partners:



This project will enhance Glen Cove with native trees, shrubs, grasses and wildflowers that are culturally significant to the Yocha Dehe Wintun Nation. It will support local pollinators and wildlife. Over the next few years, you'll see vegetation removal, weed control, and planting activities. Most activities will occur during weekday business hours, with the possibility of occasional volunteer planting events on the weekend. All efforts will be made to minimize impact on park visitors, but temporary closures may be in place to protect public safety.

For further details and information, contact Solano Resource Conservation District at 707-678-1655 or info@solanorcd.org



Waterfront Planting addition

Purpose:

- Stabilize slope to prevent erosion/bank slumping
- Deter ground squirrels
- Consolidate foot traffic to existing foot paths

Methods:

- Seed native grasses and other wildflowers on the slope face
- Plant trailing vines and “grape drapes” along top edge
- Plant a “living fence” of low growing (<3’) shrubs and grasses along top edge
- Install semi-permanent fence along most sensitive stretches



Plant Type	Botanical Name	Common Name
Grasses	Elymus triticoides	creeping wildrye
	Muhlenbergia rigens	deergrass
shrub	Ceanothus thyrsiflorus	Blueblossom Ceanothus
	Eriogonum fasciculatum	California Buckwheat
	Eriophyllum staechadifolium	Seaside Woolly Sunflower
	Frangula californica	Coffeeberry
	Heteromeles arbutifolia	Toyon
	Rosa californica	California Wildrose
	Salvia mellifera	Black Sage
Vine	Symphoricarpos albus	Common Snowberry
	Rubus ursinus	Pacific Blackberry
	Vitis californica	CA grape

Creek Corridor

- Reduce or remove non-native plants
- Expand footprint of creek corridor with native trees*, shrubs, grasses, sedges, etc.



Pre-project plant list

Riparian area

Non-Native:

Native:

Non-Native:			Native:		
tree	tree-of-heaven	<i>Ailanthus altissima</i>	tree	black walnut	<i>Juglans hindsii</i>
tree	olive	<i>Olea europaea</i>	tree	red willow	<i>Salix laevigata</i>
tree	date palm	<i>Phoenix dactylifera</i>	tree	arroyo willow	<i>Salix lasiolepis</i>
tree	winged elm	<i>Ulmus alata</i>	tree	cottonwood (dead, poisoned)	<i>Populus fremontii</i>
tree	Mexican fan palm	<i>Washingtonia robusta</i>	tree	coast live oak (dead, poisoned)	<i>Quercus agrifolia</i>
shrub	privet	<i>Ligustrum sp.</i>	tree	valley oak (dead, poisoned)	<i>Quercus lobata</i>
perennial herb	bear's breeches/oyster plant	<i>Acanthus mollis</i>			
perennial herb	artichoke thistle	<i>Cynara cardunculus</i>			
groundcover	common periwinkle	<i>Vinca minor</i>			
grass	smilo grass	<i>Piptatherum miliceum</i>			
grass	various annual grasses				
vine	cape ivy	<i>Delairea odorata</i>			
vine	English ivy	<i>Hedera helix</i>			
vine	morning glory	<i>Ipomoea purpurea</i>			
vine	Himalayan blackberry	<i>Rubus armeniacus</i>			



Plant Type	Botanical Name	Common Name
Trees	<i>Acer negundo</i>	Box Elder
	<i>Fraxinus latifolia</i>	Oregon Ash
	<i>Juglans hindsii</i>	Northern California Black Walnut
	<i>Ptelea crenulata</i>	Western Hoptree
	<i>Quercus agrifolia</i>	Coast Live Oak
	<i>Quercus lobata</i>	Valley Oak
	<i>Salix laevigata</i>	Red Willow
	<i>Salix lasiolepis</i>	Arroyo Willow
	<i>Umbellularia californica</i>	California Laurel
Shrubs	<i>Baccharis glutinosa</i>	Saltmarsh Baccharis
	<i>Cercis occidentalis</i>	Redbud
	<i>Cornus sericea</i>	Creek Dogwood
	<i>Rosa californica</i>	California Wildrose
	<i>Sambucus nigra</i>	Black Elderberry
Perennial herb	<i>Artemisia douglasiana</i>	Douglas' Sagewort
	<i>Euthamia occidentalis</i>	Western Goldentop
	<i>Glycyrrhiza lepidota</i>	Wild Licorice
	<i>Grindelia camporum</i>	Great Valley Gumweed
	<i>Verbena lasiostachys</i>	Vervain
Vines	<i>Clematis lasiantha</i>	Chaparral Clematis
	<i>Lonicera hispidula</i>	Hairy Honeysuckle
	<i>Marah fabacea</i>	Wild Cucumber
	<i>Rubus ursinus</i>	Pacific Blackberry
Ferns	<i>Adiantum jordanii</i>	California Maiden Hair Fern
	<i>Equisetum hyemale</i>	Scouringrush Horsetail
	<i>Woodwardia fimbriata</i>	Giant Chain Fern
Grasses	<i>Elymus triticoides</i>	creeping wildrye
Rushes/Sedges	<i>Carex barbarae</i>	Santa Barbara sedge
	<i>Carex pragracilis</i>	slender sedge
	<i>Juncus balticus</i>	Baltic Rush



Eastern Slope

- Control invasive fennel and winged elm populations
- Plant native shrubs and vines to create songbird and pollinator habitat

Plant Type	Botanical Name	Common Name
Tree	<i>Aesculus californica</i>	California Buckeye
	<i>Quercus agrifolia</i>	Coast Live Oak
	<i>Quercus lobata</i>	Valley Oak
	<i>Umbellularia californica</i>	California Laurel
shrub	<i>Arctostaphylos</i> spp.	Manzanita
	<i>Artemisia californica</i>	California Sagebrush
	<i>Baccharis pilularis</i>	Coyote Bush
	<i>Ceanothus thyrsiflorus</i>	Blueblossom Ceanothus
	<i>Cercis occidentalis</i>	Redbud
	<i>Epilobium canum</i>	California Fuchsia
	<i>Eriodictyon californicum</i>	California Yerba Santa
	<i>Eriogonum fasciculatum</i>	California Buckwheat
	<i>Eriophyllum staechadifolium</i>	Seaside Woolly Sunflower
	<i>Frangula californica</i>	Coffeeberry
	<i>Heteromeles arbutifolia</i>	Toyon
	<i>Lupinus arboreus</i>	Coastal Bush Lupine
	<i>Ribes</i> spp	currant, gooseberry
	<i>Rosa californica</i>	California Wildrose
	<i>Salvia mellifera</i>	Black Sage
<i>Symphoricarpos albus</i>	Common Snowberry	
Vine	<i>Rubus ursinus</i>	Pacific Blackberry
	<i>Vitis californica</i>	CA grape

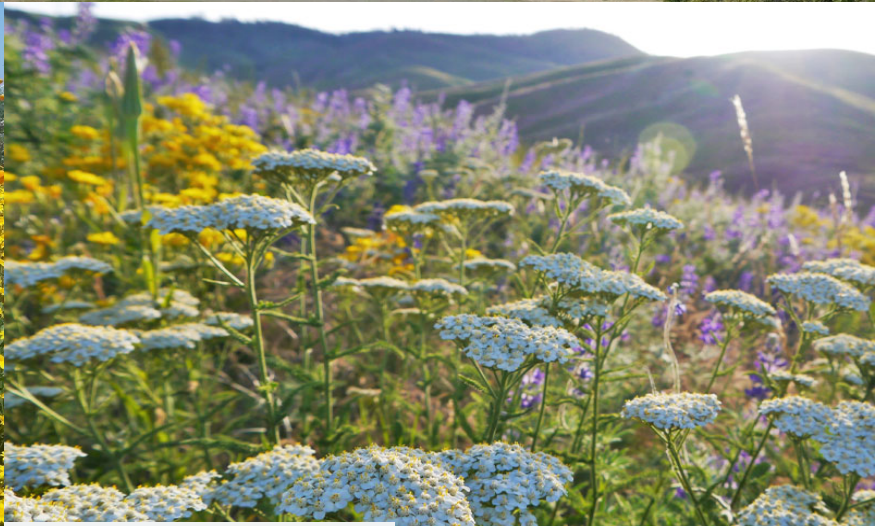


Existing Shrub Planter areas

- Overhaul irrigation
- Mulch heavily
- Replant with culturally important plants
- Install interpretive signage

Plant Type	Botanical Name	Common Name
Shrubs	Arctostaphylos spp.	Manzanita
	Artemisia californica	California Sagebrush
	Baccharis pilularis	Coyote Bush
	Ceanothus thyrsiflorus	Blueblossom Ceanothus
	Cercis occidentalis	Redbud
	Epilobium canum	California Fuchsia
	Eriodictyon californicum	California Yerba Santa
	Frangula californica	Coffeeberry
	Heteromeles arbutifolia	Toyon
	Ribes spp	currant, gooseberry
	Ribes aureum	Golden Currant
	Salvia clevelandii	Cleveland sage
	Salvia mellifera	Black Sage
Perennial herb	Apocynum cannabinum	dogbane, Indian hemp
	Artemisia douglasiana	Douglas' Sagewort
	Epilobium canum ssp. canum	California Fuchsia
	Salvia spathacea	Hummingbird Sage

Demonstration Meadow



hedgerowfarms.com/online-store/Bay-Area-Wildflower-Mix-p102649261

korotkinassociates.com/yarrow/



laspilitas.com



laspilitas.com



Copyright © 2016 John Doyen

Pollinator Pods

- Define 10 new planting areas (“pollinator pods”)
- Plug plant with native perennial herbs
- Focus is providing pollinator habitat



laspilitas.com



laspilitas.com



laspilitas.com



laspilitas.com

Glen Cove Enhancement Project Installation Timeline	2021				2022				2023				2024				2025				2026		
	Spr	Sum	Fall	Win	Spr	Sum	Fall	Win	Spr	Sum	Fall	Win	Spr	Sum	Fall	Win	Spr	Sum	Fall	Win	Spr	Sum	Fall
Permitting & Planning																							
CEQA Notice of Exemption	█	█																					
CDFW Streambed Alteration Agreement Notification	█	█																					
Waterfront Slope																							
Invasive tree removal and control			█																				
install fence			█																				
Install irrigation			█																				
plant "living fence"			█	█																			
seed native grasses and wildflowers on slope face			█	█			█	█															
irrigation operation										█	█				█	█					█	█	
Creek Corridor																							
Invasive plant removal & control			█	█		█	█	█															
Plug plant grasses, sedges, etc.								█															
Plant trees, shrubs										█													
install interpretive signage															█	█							
irrigation operation										█	█				█	█					█	█	
East Slope																							
Invasive plant removal & control						█	█	█															
Install irrigation							█																
Plant shrubs								█	█														
irrigation operation														█	█						█	█	
Pollinator Pods																							
weed control and mulching										█													
install irrigation											█												
seed wildflowers												█											
plug plant perennials													█										
irrigation operation														█	█						█	█	
Shrub planter rehabilitation																							
remove dead/declining and invasive plants		█	█			█	█	█															
weed control and mulching										█	█	█											
irrigation installation											█	█											
plant new shrubs													█	█									
install interpretive signage														█	█								
irrigation operation														█	█					█	█		
Demonstration Meadow																							
weed control																							
drill-seed grasses & wildflowers												█	█										
irrigation installation													█										
plug plant sedges and forbs													█	█									
install interpretive signage														█	█								
irrigation operation														█	█					█	█		
Throughout the site																							
drill-seed grasses & wildflowers (where appropriate)											█	█											
invasive weed control (spot treatments)						█	█				█	█			█	█							

Upcoming:

- Invasive tree removal
- Install waterfront fencing in selected areas
- Prune back agave plants at the base of the concrete stairs to improve beach access
- Install waterfront irrigation
- 11/20/2021 - Waterfront Volunteer Planting Event



Questions & Comments

Today

- Use the Q&A option
- “Raise hand” option
 - Might be under “More”

Future communications

- Email sarah.mckibbin@solanorcd.org
- Call 707-678-1655